

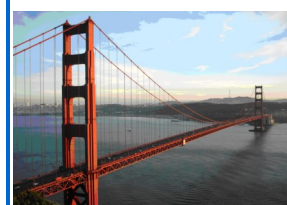


# Pacific Northwest Explorer

## Daily Itinerary 2013

### Day 1: San Francisco

Meet and greet in San Francisco at 4pm in the hotel lobby. We drive over Golden Gate Bridge and get to know each other at dinner in Sausalito, refreshments provided by Travel Dream West. The tour guide and driver will share some important information and hand out tour documentation. Night in downtown San Francisco.



### Day 2: Golden Gate Bridge – Bodega Bay –Mendocino - Fort Bragg

Leave San Francisco in the early morning over Golden Gate Bridge, travel on Highway 101 through California wine country to Bodega Bay where Alfred Hitchcock filmed "The Birds" in 1963.. Enjoy a picnic lunch along scenic Highway 1. Arrive at the Mendocino Coast Botanical Gardens with its 47 acres of ocean front gardens and a trail along thunderous waves. Night in Fort Bragg.



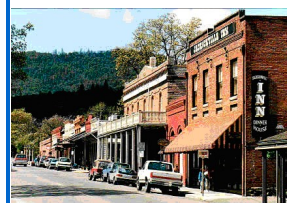
### Day 3: Redwood National Park and State Park – Trees of Mystery – Ashland, Oregon

Drive along impressive Avenue of the Giants in Humboldt Redwood State Park with its tallest trees in the world, reaching up to 380 ft tall and more than 2,000 years old. Paul Bunyan's museum offers an interesting collection of Native American art objects. A narrow gravel road leads us to Stout Grove in Jedediah Smith Redwood State Park for a hike through a spectacular selection of old growth Redwoods. Back on the Redwood Highway crossing the border into Oregon. Stop in Grants Pass, then on to the historic town of Jacksonville where we stay for two nights.



### Day 4: Ashland – optional whitewater rafting – wine tour– optional Shakespeare Theater

Spend the morning exploring the historic mining town of Jacksonville designated as a National Historic Landmark. Later visit nearby Ashland, a Victorian town famous for its Shakespeare festival. In the afternoon take a drive through scenic valleys in the heart of Oregon's wine country with opportunity for wine tasting. Alternatively, there is a half day optional white water rafting excursion on the Rogue River (arranged with pre-reservation). In the evening attend an optional theatre play at the famous Shakespeare festival with pre-ordered tickets.



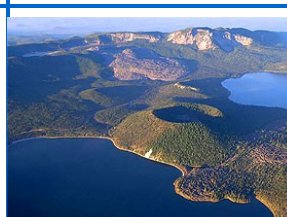
### Day 5: Klamath See – Favell Museum – Crater Lake National Park – La Pine

A scenic drive through old growth Douglas fir forests leads to Klamath Falls. Visit the Favell Museum which is dedicated to the preservation of Native American culture and houses over 100,000 artifacts. Briefly stop at Fort Klamath, a military outpost near the western end of the Oregon Trail and a historic site of the last Indian wars. Driving on the Volcanic Legacy Scenic Byway reach Crater Lake National Park and explore the park on walks along the rim with views of Wizard Island. Spend the night in the small logging community La Pine, Central Oregon.



### Day 6: Newberry Volcano National Monument - Paulina Lake – High Desert Museum - Bend

In the morning explore some fascinating lava landscapes at Newberry National Monument featuring volcanic Obsidian flows and a walk and picnic along Lake Paulina. Afternoon destination is the famous High Desert Museum with indoor and outdoor displays highlighting Oregon's unique high desert topography, wildlife and culture.



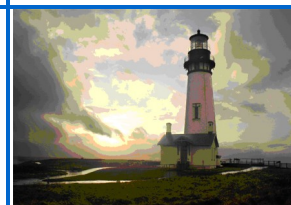
**Day 7: Sisters – Cascade Mountains - Santiam Pass - Yachats**

Stop for a walk at scenic Smith Rock State Park with its deep river canyons and spectacular views. Then onto Santiam Pass Scenic Byway which provides dramatic views of the snowcapped Cascade Mountains. Picnic and walk at Emerald colored Clear Lake and hike along nearby beautiful Sahalie waterfalls. Driving West reach the Pacific coastline and drive along the Pacific Coast Scenic Byway to Yachats. Photo stop at Heceta Head Lighthouse. Stay two nights at ocean front resort in Yachats.



**Day 8: Newport – Oregon Coast Aquarium**

Visit Yaquina Head Outstanding National Area and its working lighthouse. Picnic lunch at a beachside State Park and walk along the sandy beaches. Visit the Oregon Coast Aquarium in Newport, former home of Keiko, the killer whale. Take a stroll through Newport's old town and harbor with its many galleries and good restaurants.



**Day 9: Scenic Pacific Coast Highway – Tillamook - Portland**

Travel north along the Oregon Pacific Coast with beautiful views. Stop for a walk amongst tranquil coastal forests and have lunch at a State Park. After lunch spend some time shopping in a tax-free factory outlet mall. Then on to Cape Lookout State Park with its fantastic beach views and trails for a walk. Visit the tasting room filled with the Northwest's most popular cheddar cheese at the Tillamook Cheese Factory.



**Day 10: Rose Test Garden – Columbia River Highway – Mount Hood**

Walk in Portland's Rose Test Gardens with beautiful views over Portland. Go on a day trip to Mt. Hood (11,249 ft), a huge snowcapped, dormant volcano with very impressive natural surroundings. Drive along one of America's most scenic routes, the Historic Columbia River Hwy, with its splendid views of the mighty Columbia River. Stop at Multnomah Falls. Visit Bonneville Dam and proceed up the Mt. Hood Scenic Byway. Hike around a mountain lake near Mt. Hood. Visit the historic Timberline Lodge, showplace of many famous movies. Dinner in Portland.



**Day 11: Mt. St. Helens – Ocean Shores, Washington**

Crossing into the state of Washington, today's highlight is Mt. St. Helens, a Cascade volcano that erupted in May 1980. Approximately 230 square miles of forest were buried beneath volcanic deposits and the surrounding landscape was changed dramatically. At the visitor center watch an interesting documentary about the eruption, before driving up to the Johnston Ridge Observatory at 4,314 ft. Enjoy views of the lava dome, pumice plain and the landslide deposit. Explore the area on foot following one of the many beautiful hiking trails and have picnic. Overnight in Ocean Shores.



**Day 12: Olympic National Park – Sol Duc - Port Angeles**

Today, explore parts of Olympic National Park on an easy self-guided walk within the Hoh Rain Forest. Trails lead through enchanted, moss covered temperate rain forest. Later we'll stop at scenic Rialto Beach for picnic lunch and a walk along the wild Pacific shore. Drive on to Sol Duc Hot Springs for a relaxing swim in mineral hot springs and freshwater pools. Tonight stay in Port Angeles, a harbor town on the Olympic Peninsula on the Strait of San Juan de Fuca. With clear weather you can see Canadian Vancouver Island.



**Day 13: Olympic National Park – Bainbridge Island Ferry – Seattle**

Weather permitting, drive up to Hurricane Ridge with fantastic views of the Olympic mountains including Mount Olympus, and the Strait of San Juan de Fuca. Explore local Native art of the s'Klallam tribe in Jamestown. In the late afternoon board the Bainbridge ferry for the last tour night in Seattle. We'll say good bye at dinner.



**Day 14: Today the tour ends** *Goodbye and Aufwiedersehen!*